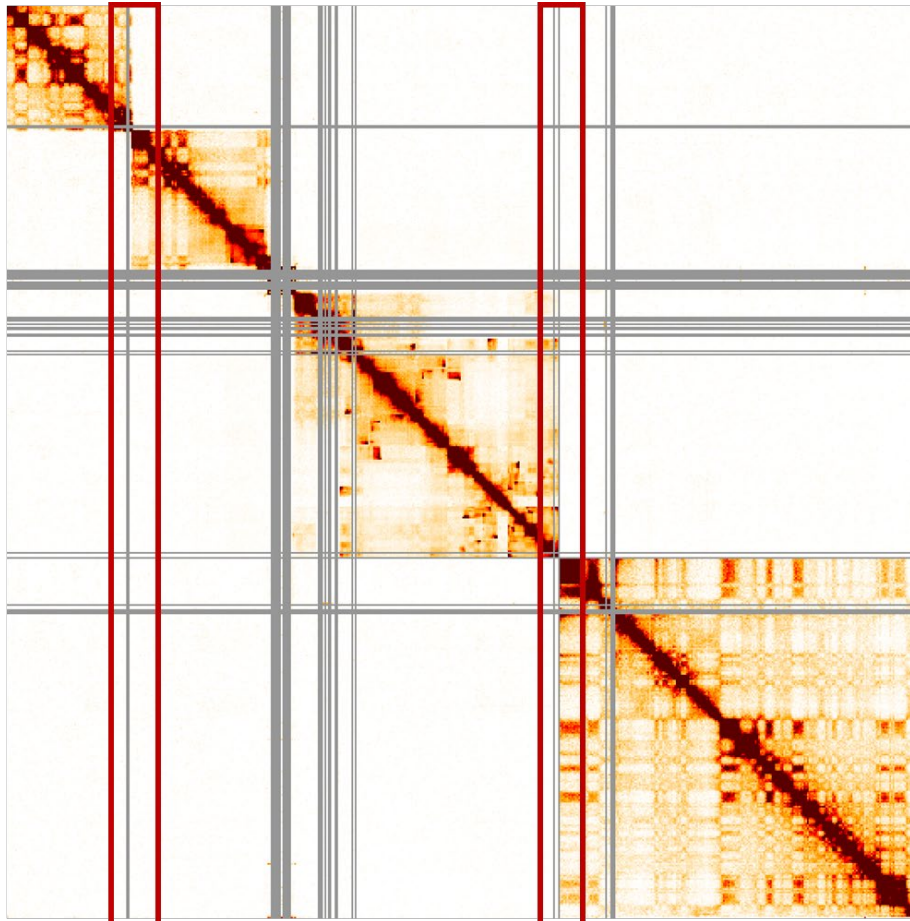
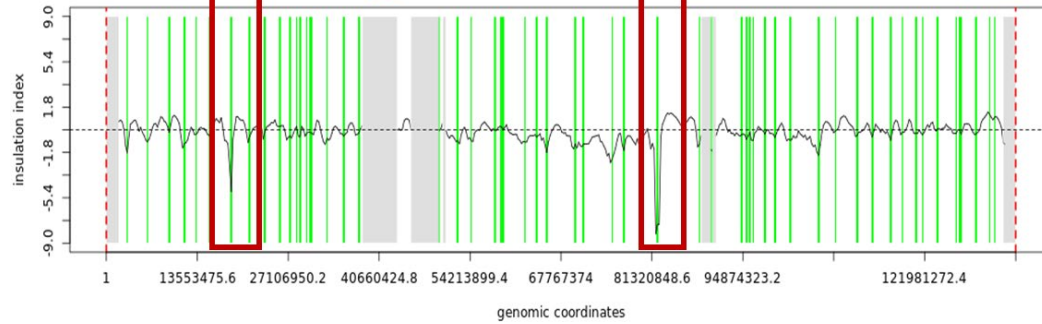


A



B



C

header	start	end	midpoint	insulationScore
6786 hg19 chr10:15000001-15250000	15000001	15250000	15125001	-0.381944518
6787 hg19 chr10:15250001-15500000	15250001	15500000	15375001	-0.466191433
6788 hg19 chr10:15500001-15750000	15500001	15750000	15625001	-0.084644467
6789 hg19 chr10:15750001-16000000	15750001	16000000	15875001	0.084578339
6790 hg19 chr10:16000001-16250000	16000001	16250000	16125001	0.625311169
6791 hg19 chr10:16250001-16500000	16250001	16500000	16375001	0.887754689
6792 hg19 chr10:16500001-16750000	16500001	16750000	16625001	0.726407409
6793 hg19 chr10:16750001-17000000	16750001	17000000	16875001	0.568173736
6794 hg19 chr10:17000001-17250000	17000001	17250000	17125001	0.96685072
6795 hg19 chr10:17250001-17500000	17250001	17500000	17375001	0.179920695
6796 hg19 chr10:17500001-17750000	17500001	17750000	17625001	-0.862118206
6797 hg19 chr10:17750001-18000000	17750001	18000000	17875001	-0.888747144
6798 hg19 chr10:18000001-18250000	18000001	18250000	18125001	-1.1175402
6799 hg19 chr10:18250001-18500000	18250001	18500000	18375001	-2.88607681
6800 hg19 chr10:18500001-18750000	18500001	18750000	18625001	-4.90913542
6801 hg19 chr10:18750001-19000000	18750001	19000000	18875001	-0.733429329
6802 hg19 chr10:19000001-19250000	19000001	19250000	19125001	0.14711439